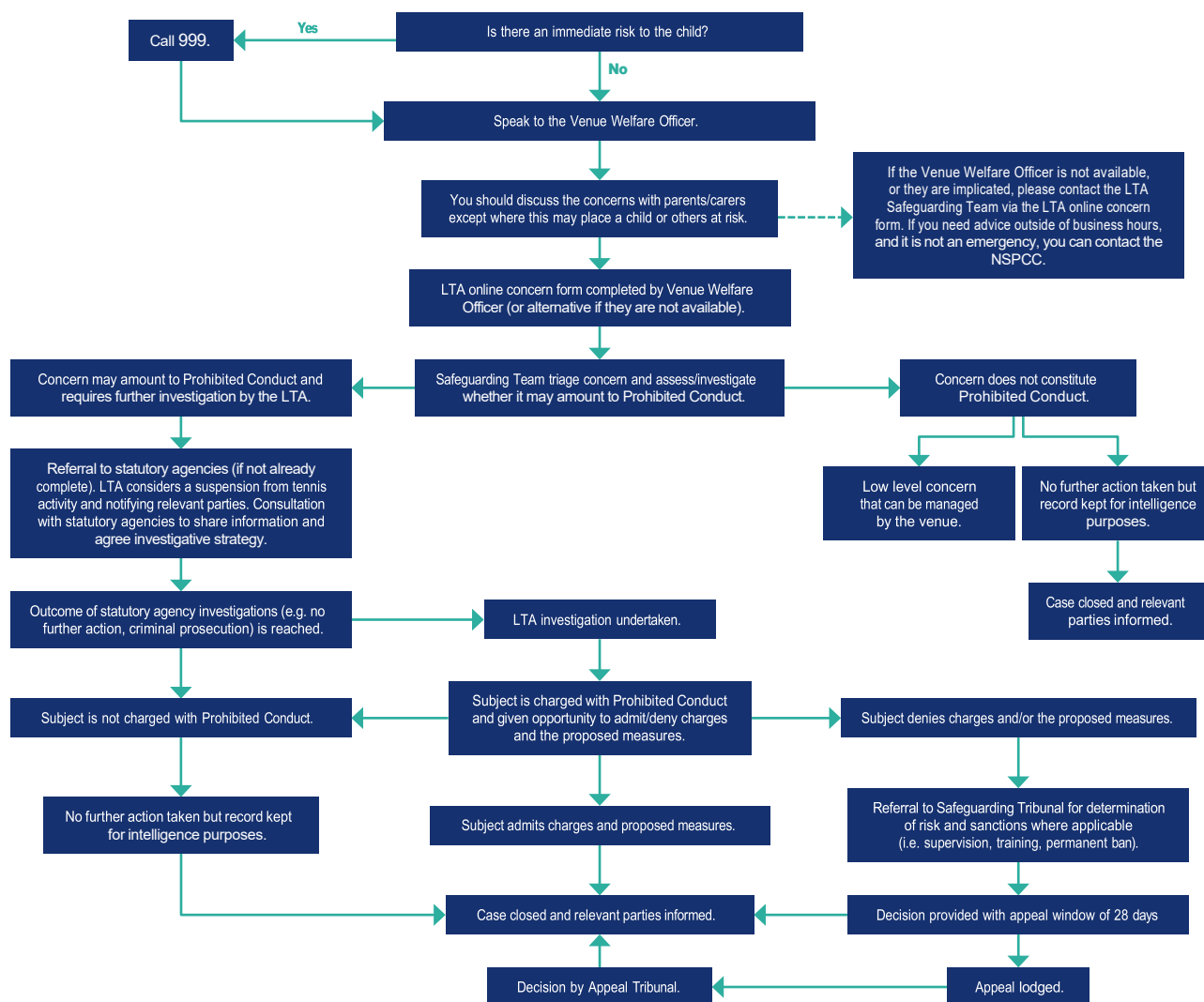


APPENDIX A: REPORTING A SAFEGUARDING CONCERN THAT OCCURS WITHIN TENNIS

Safeguarding concerns (including low level concerns) arise about a child or a person who works with children.



Contacts

LTA Lead Safeguarding Officer:

David Humphrey (contactable via online concern form)

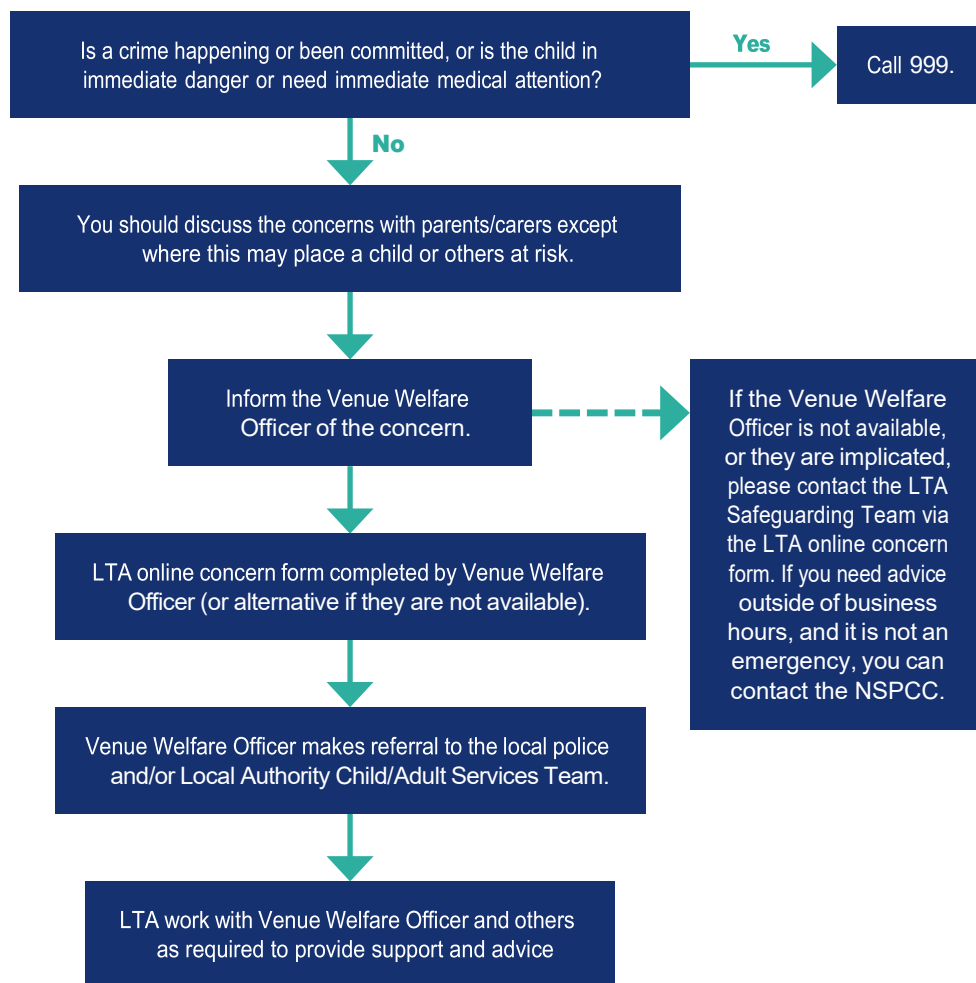
LTA online concern form: safeguardingconcern.lta.org.uk

NSPCC: 0800 800 5000

Emergency Services: 999

APPENDIX B: REPORTING A SAFEGUARDING CONCERN THAT HAPPENS OUTSIDE OF TENNIS*

Concerns about a child (including a person who works with them).



Contacts

LTA Lead Safeguarding Officer:

David Humphrey (contactable via online concern form)

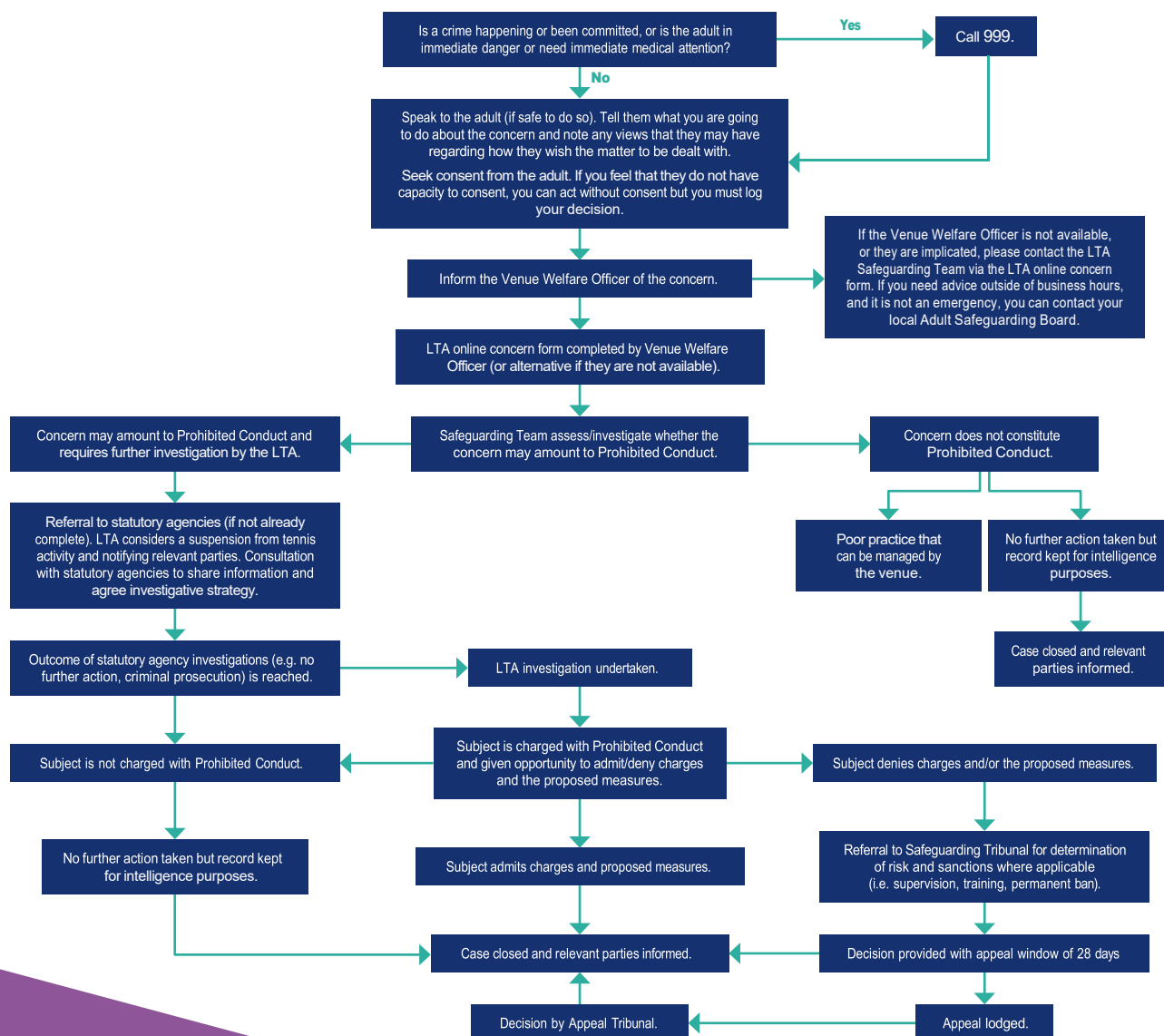
LTA online concern form: safeguardingconcern.lta.org.uk

NSPCC: 0808 800 5000

Emergency Services: 999

APPENDIX A: REPORTING A SAFEGUARDING CONCERN THAT OCCURS WITHIN TENNIS

You have a concern, or have been told about, possible abuse of an adult at risk, poor practice or wider welfare issues.



Contacts

LTA Lead Safeguarding Officer:

David Humphrey (contactable via online concern form)

LTA online concern form: safeguardingconcern.lta.org.uk

Ann Craft Trust: 0115 951 5400

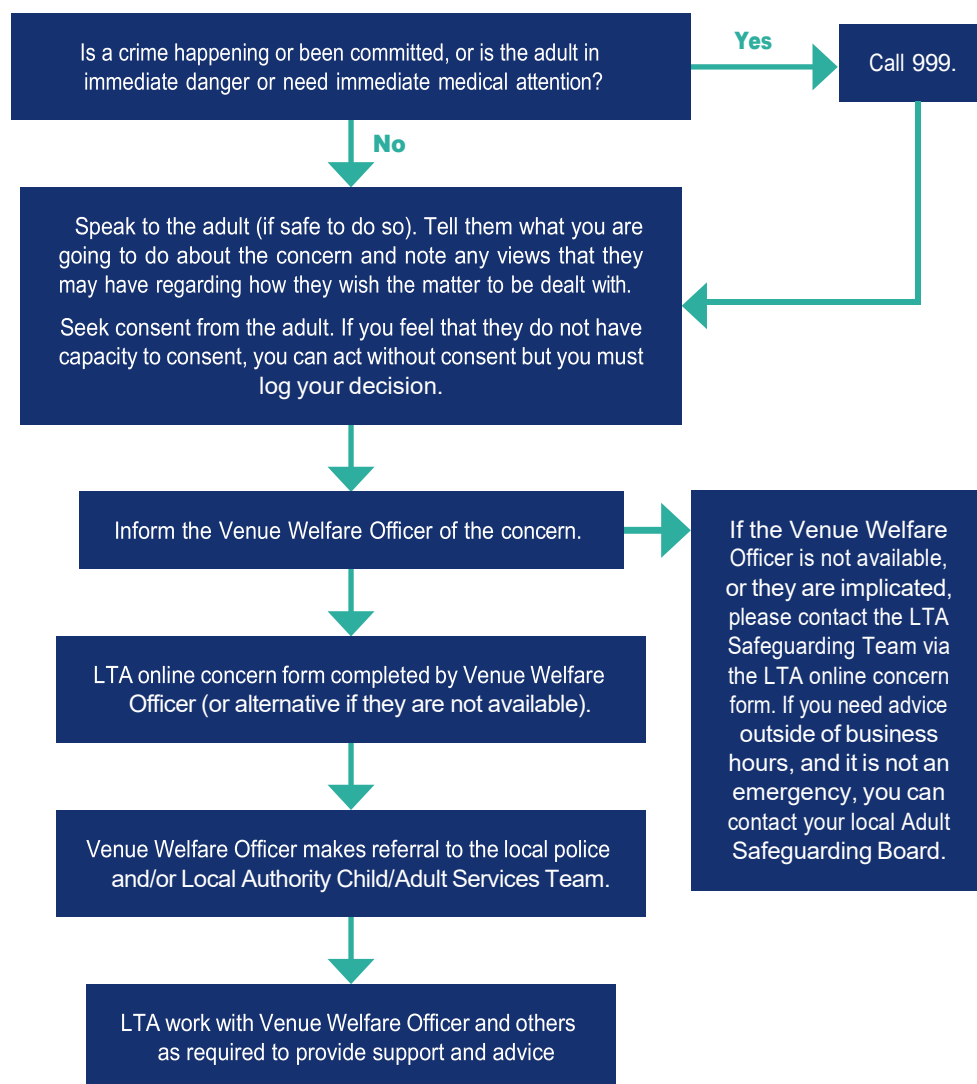
Emergency Services: 999

Find your nearest Adult Safeguarding Board:

www.anncrafttrust.org/resources/find-your-nearest-safeguarding-adults-board

APPENDIX B: REPORTING A SAFEGUARDING CONCERN THAT HAPPENS OUTSIDE OF TENNIS*

You have a concern about an adult at risk (including a person who works with them)



Contacts

LTA Lead Safeguarding Officer:

David Humphrey (contactable via online concern form)

LTA online concern form: safeguardingconcern.lta.org.uk

Ann Craft Trust: 0115 951 5400

Emergency Services: 999

Find your nearest Adult Safeguarding Board:

www.anncrafttrust.org/resources/find-your-nearest-safeguarding-adults-board

* A concern happening outside of tennis means any concern or allegation that has occurred in another setting, e.g. an adult at risk being abused by a carer, domestic violence at home, etc

SAFEGUARDING AND

WELFARE OFFICER

**NAME**

JAN RANDALL

PHONE

07762 336635

EMAIL

jan@lltsc.co.uk

ABOUT ME

My name is Jan Randall and I have been LLTSC's Safeguarding & Welfare Officer since December 2021. I have been a member for over 10 years and really enjoy my social and team tennis. I work as a counsellor and deal a lot with safeguarding issues at work, both with children and adults. My responsibilities to the club will be to promote and prioritise the safety and well-being of children and adults. It is also to encourage and maintain a culture where members feel able to raise any genuine safeguarding concerns and to know they will be taken seriously.

The safeguarding policy can be found on the club's website. If you wish to contact me with any questions or concerns please email me at jan@lltsc.co.uk or call 07762 336635